



Dear Friends,

Below please find the latest issue of *Retirement Times*. Our goal is to provide you with timely and relevant information each month that you can use in running your business.

If we can be of any help or service to you, or if you would like to discuss any parts of this newsletter with us, please feel free to reach out. Thank you as always for your confidence.

Best regards,

Victor



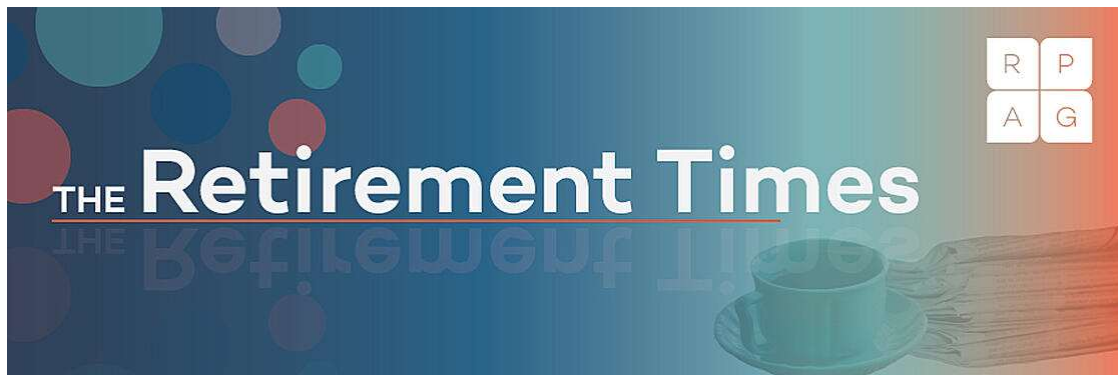
**Victor S. Levy, J.D., LL.M., CLU, CFP®**

1818 Market St | Suite 3232 | Philadelphia, PA 19103

Main: 215-875-8720 | Fax: 267-875-8756

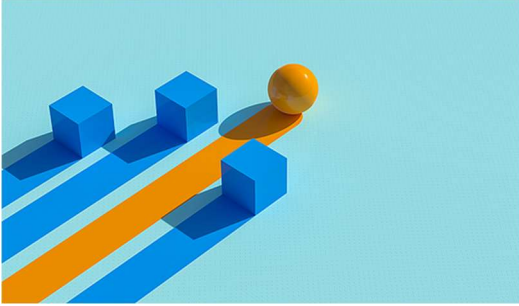
[vlevy@levywealth.com](mailto:vlevy@levywealth.com)

[www.levywealth.com](http://www.levywealth.com)



---

IN THIS MONTH'S ISSUE



### **IPS Can Still Add Value for Plans Despite Goldman Sachs Dismissal**

An attorney for a former Goldman employee alleged that the company violated ERISA by, among other things, failing to adopt an IPS.

[Read More »](#)



### **Workers Are Turning to Employers for Inflation Help**

With inflation at its highest levels in more than four decades, it's not surprising that nearly three in four American workers report they're experiencing increased stress concerning their personal finances.

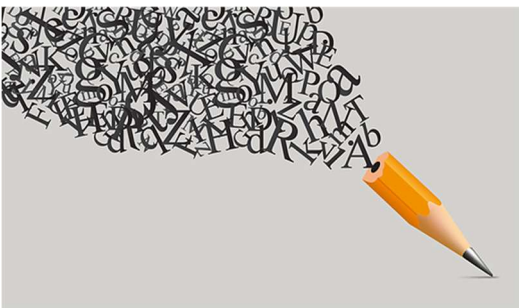
[Read More »](#)



### **Speaking of One Percent**

Since the contribution limits were recently raised by 10%, we thought now might be a good time to share creative ways to communicate to your participants the benefits of increasing contributions to their retirement plan.

[Read More »](#)



### **Participant Corner: Retirement Word Scramble**

Investing your money into retirement savings early is important to setting yourself on the path to your ideal retirement.

[Read More »](#)

Securities offered through LPL Financial, Member of FINRA/SIPC. Investment Advice offered through Levy Wealth Management Group, a registered investment advisor and separate entity from LPL Financial.

The information contained in this email message is being transmitted to and is intended for the use of only the individual(s) to whom it is addressed. If the reader of this message is not the intended recipient, you are hereby advised

that any dissemination, distribution or copying of this message is strictly prohibited. If you have received this message in error, please immediately delete.

The material presented was created by RPAG.

This material was created to provide accurate and reliable information on the subjects covered but should not be regarded as a complete analysis of these subjects. It is not intended to provide specific legal, tax or other professional advice. The services of an appropriate professional should be sought regarding your individual situation.

To remove yourself from this list, or to add a colleague, please email us at [info@levywealth.com](mailto:info@levywealth.com) or call 215-875-8720.

Securities and Retirement Plan Consulting Program advisory services offered through LPL Financial, a registered investment advisor, member FINRA/SIPC. Other advisory services offered through Levy Wealth Management Group, a registered investment advisor.

RPAG, Levy Wealth Management Group and LPL Financial are separate entities.

Levy Wealth Management Group does not make any recommendations on vendor selections or investment products mentioned in this communication.

LWVG is not affiliated with Thrive